

Caution: Follow the bottom view for the cable layout.

Specifications

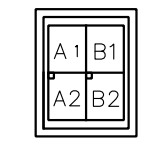
Items	Unit	Specifications
Rated torque	N·m	30
Max torque	N·m	75
Rated current	A	6.5
Rated rotation speed	rps	5
Rated output	W	942
Encoder type		Optical absolute (single-turn)
The signal output		Serial communication
Interpolation unit		Built-in motor
Detection pulse	ppr	2,097,152
Electrical detection resolution	arc second	0.618
Allowable moment load	N·m	27.3
Allowable axial load	N	2,900
Radial runout (No load)	mm	0.01
Axial runout (No load)	mm	0.01
Rotor moment of inertia	kg·m ²	0.0053
Mass	kg	8.8
Magnetic pole detection		Absolute position detection
Power Source	ACV	3-phase 200V AC
Paired servo driver		800W
Duty type		Continuous (S1)
Mounting attitude		Horizontal (Rotor facing upward)
Protection class	IP	42
Operating temperature	°C	0~40
Humidity (Non-condensing)	%	0~85
Vibration resistance	G	1
Withstand voltage	AC 1500V	for 1 min only
Insulation resistance	Ω	100M or higher

Nameplate list

Index	Details
Nameplate 1	Motor serial No.
Nameplate 2	Encoder type, Resolution
Nameplate 3	Encoder software

Power connector pin assignment

Pin	Phase	Line color
B1	U	Red
B2	V	White
A1	W	Black
A2	Ground	Green

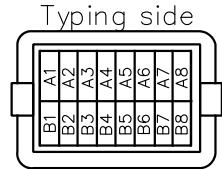


Power connector Housing 1-917808-2 (TE) Pin 917804-2 (TE)

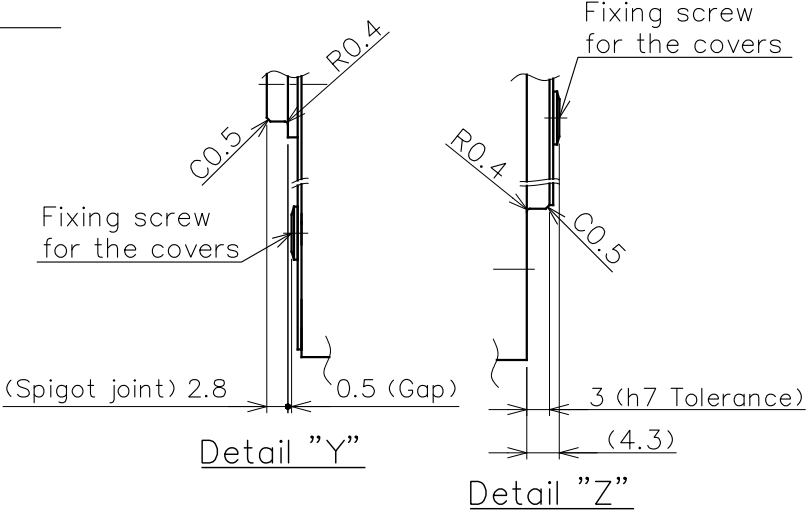
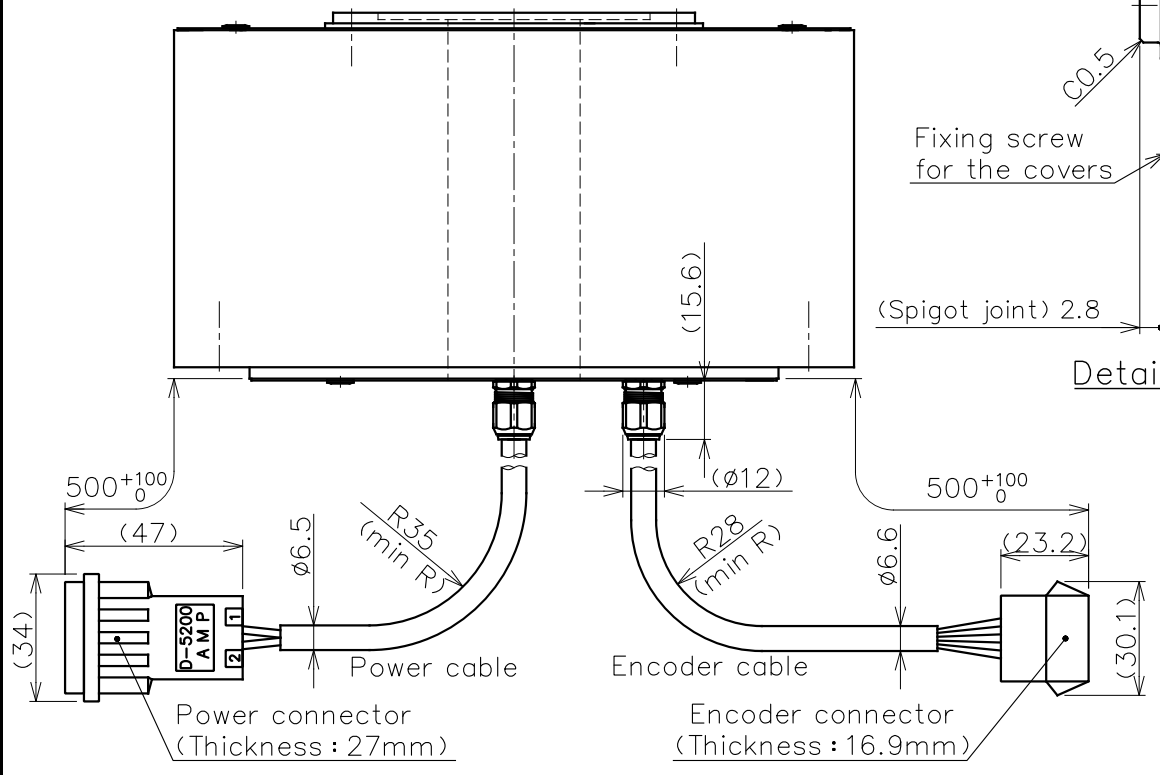
Encoder connector pin assignment

Pin	Signal	Pin	Signal
A1	EP5	A5	N.C.
B1	GND	B5	N.C.
A2	EP5	A6	Reserved (Caution3)
B2	GND	B6	Reserved (Caution3)
A3	SD1	A7	Reserved (Caution3)
B3	SD1*	B7	Reserved (Caution3)
A4	N.C.	A8	N.C.
B4	N.C.	B8	FG

Un-used PINS: A4, A5, A8, B4 and B5



Encoder connector Housing (JST) J21DPM-16V-KY Contact (JST) SJ2M-002GF-M1.0N



Caution
 1.No surface treatment on the rotor.
 Please remove the anticorrosive coating before using the motor.
 2.Allowable axial load and allowable moment load indicated in the spec. sheet are the maximum allowable load when each load is independently activated.
 Please make sure to consult us in case of combined load at the axial load, radial load, and moment load to be activated, or life of the motor.
 3.Please do not wire the pin (A6~B7) which is reserved for encoder manufacturer to avoid the encoder troubles.
 4.Motor outer periphery is the casting surface, and certain irregularity may be found.

◆ The life of bearing and runout accuracy are different by load condition.
 ☆ Please make sure to consult with us if the mounting is other than horizontal attitude.

Rev. mark	Rev. note	Approved Date	Checked Date	Designed Date	NOTE File name: SE-79290.dwg	Entry no. R1-71763	Product no. 2,47-93,0,0
Entry No.					Approved	Checked	Designed
					Surface treatment	Refer drawing	Model
							τDISC motor ND180-95-LSP (ABS) NMR-SSEJA2A-941AP
					Material	Refer drawing	Title
					Scale	1/2	Dimensions (ABS) High precision
					Third angle projection		Drawing No.
							SE-79290
							REV.